



Rainier Desktop Installation Instructions

System Requirements:

- PC with 1.8 Gigahertz (GHz) or higher processor clock speed.
- 1 Gigabyte (GB) of RAM or higher.
- 10 Gigabytes (GB) of available hard disk space.
- Microsoft Windows XP SP2, Vista, or Windows 7
- Broadband Connection (DSL/Cable 768 kbps or faster)
- **Microsoft Internet Explorer 8.0**

Please temporarily disable any virus scanners, spyware scanners, and firewalls before starting the installation process.

Using **Microsoft Internet Explorer**, navigate to the following URL:
<http://www.rainiersoftware.com/Resources.aspx>.

1. Click on the Download Rainier Desktop image to start installing the Rainier Desktop.



1. After the installation has completed, the Rainier Desktop will ask for your username and password. If this is the first time using the Rainier Desktop on this computer continue to step3.

Rainier Desktop - Login

 rainier

Enter your administrator username and password to login to the application.

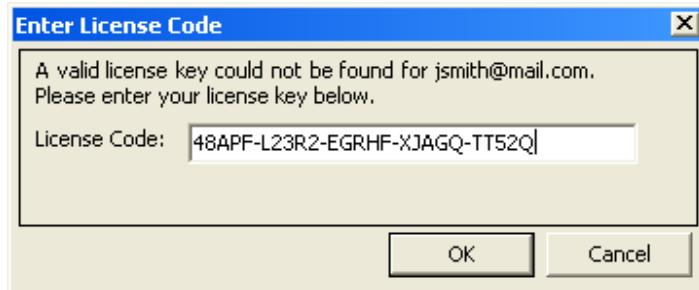
Username:
jsmith@mail.com

Password:
●●●●●●●●●●

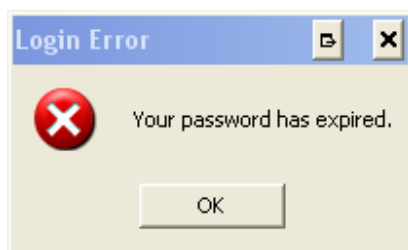
Remember Username

v2.1.1.301d

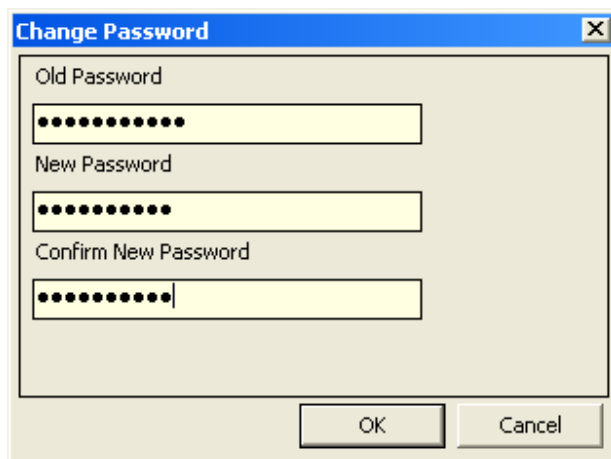
2. You will then be prompted to enter your personal license key code (unique to your username). If this is the first time using the Rainier Desktop go to step 4.



3. After clicking the ok button you will get a prompt that your temporary password has expired click ok.



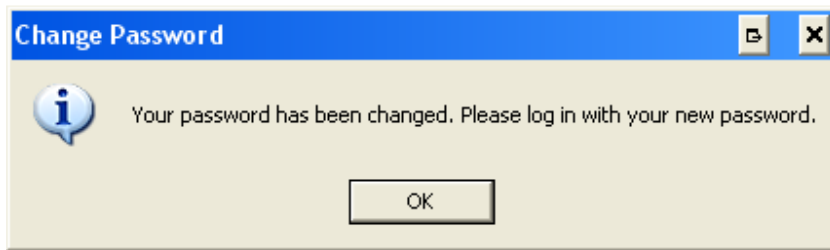
4. On the new screen you will need to enter your temporary password then enter your new password.



The password MUST:

- Contain eight characters or more
- Contain characters from three of the following four character classes:
 1. Lower-case alphabetic (e.g., a-z)
 2. Upper-case alphabetic (e.g., A-Z)
 3. Numeric (i.e. 0-9)
 4. Punctuation and other characters (e.g., !@#\$%^&*()_+|~-=\`{}|:~<>?,./)

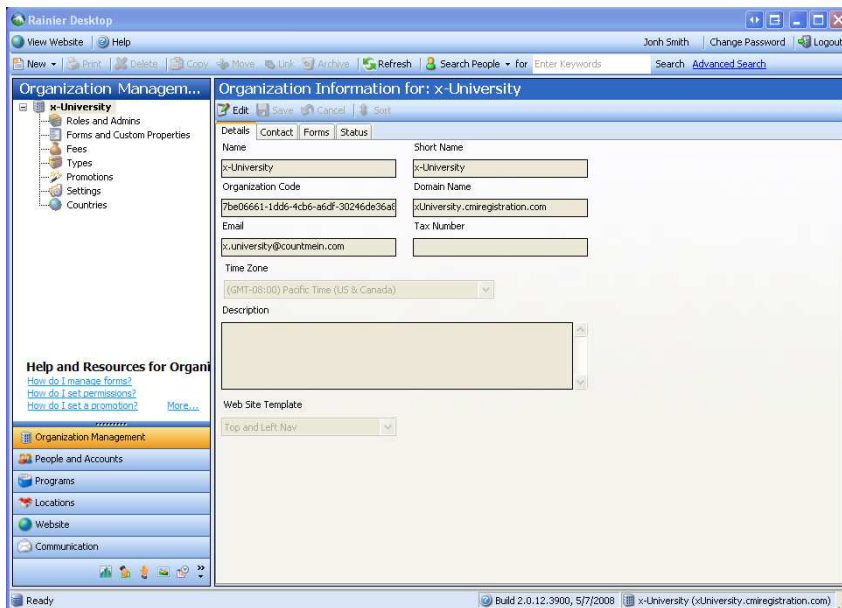
5. Once you have entered "Strong Password" you will get the following prompt.



6. After clicking ok you will now be prompted to enter your username and new password.

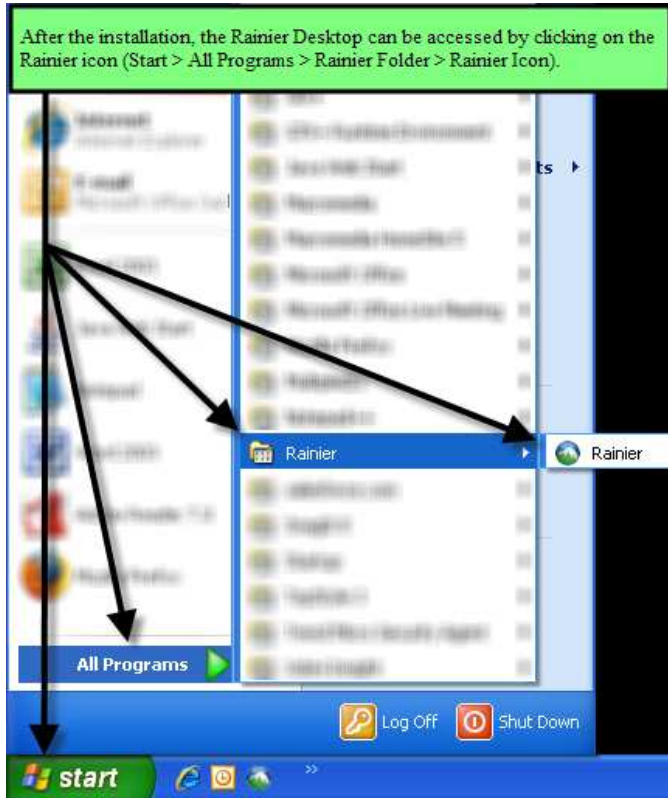


7. After you log in you will be presented with the Rainier Desktop, if your login was correct.



How to create a shortcut

After a successful installation, the Rainier Desktop can be accessed via the Start menu (Start > All Programs > Rainier Folder > Rainier Icon).



To create a shortcut on your desktop, right-click on the Rainier icon and select Send To > Desktop (create shortcut).



Please don't hesitate to contact us if you encounter any problems with the installation or logging in.

Regards,

Client Services
help@rainiersoftware.com
T. (866) 268-6863